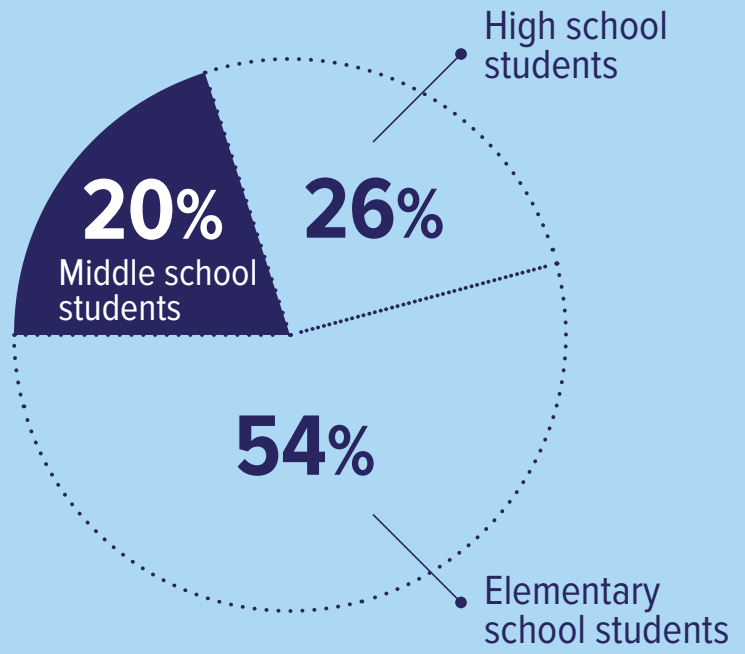


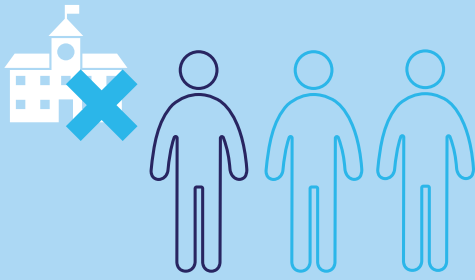
# Homeless Middle Schoolers Are 2x as Likely to Be Suspended as Their Classmates

Over **19,000** middle school students experienced homelessness in SY 2016–17.

**44%** increase in the past six years.

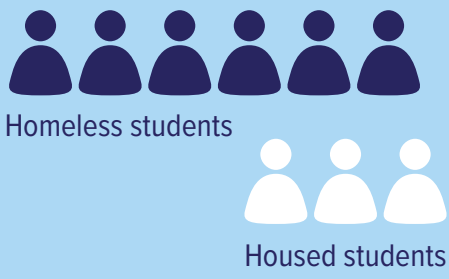


Students who experienced homelessness were **suspended** at almost **2X** the rate of housed students.



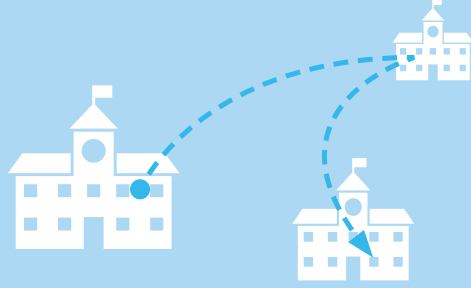
**Homeless** students account for **9%** of middle schoolers but **14%** of middle school suspensions.

Homeless middle school students who are suspended are about 4x more likely to drop out of school than their classmates who are not suspended.



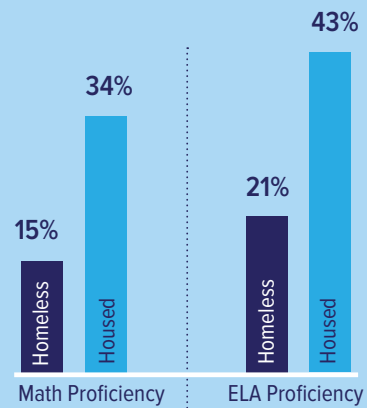
...and over **3X** as likely to **transfer schools** mid-year as housed students.

Those who were **homeless** were over **2X** as likely to be **chronically absent**...



When homeless students are able to attend school regularly, they are less likely to fall behind in their learning and more likely to perform at grade-level on annual exams.

**Homeless** students were **half as likely** to score **proficient** in math and English Language Arts, compared to housed students.



**Middle school proficiency is a strong predictor of high school graduation. Nearly all homeless students (94%) who scored proficient on both their math and ELA exams in eighth grade graduated on time with their class.**