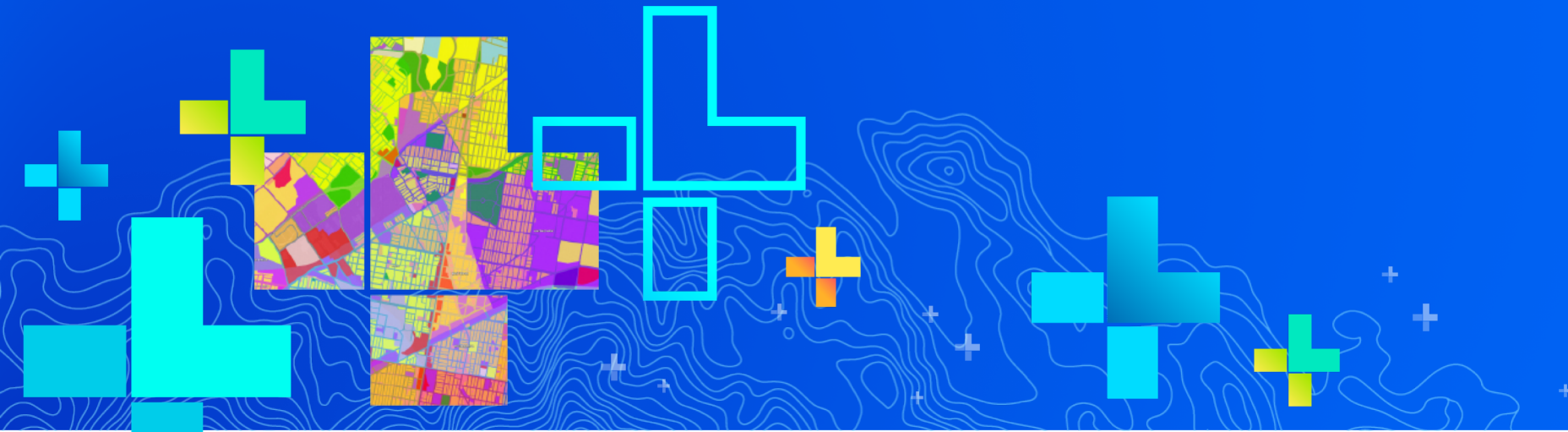


# Using GIS to Respond to the Homeless Crisis:

## *Mapping the Intersection of Hunger and Student Homelessness Across America*

Rachel Barth, Senior Policy Analyst

Mukta Ramola, GIS Analyst







# ICPH: Bringing Family Homelessness into Focus

- The Institute for Children, Poverty, and Homelessness (ICPH) is a New York City-based policy research organization focused on family homelessness in New York City and throughout the United States
- All materials we produce are available for free at [www.ICPHusa.org](http://www.ICPHusa.org)



# Reports

ICPH researches the causes of family homelessness, the demographics of this growing population, the conditions that make it difficult for homeless families to become self-sufficient, and the programs that are most effective in helping them transition out of poverty. ICPH works with programs and partners across the U.S. to conduct and disseminate this research in order to improve services and influence public policy.



Community

September 11, 2018

**One-Third of Georgia's Homeless Students Live in Rural Areas**



Education

September 6, 2018

**Learning English While Homeless: Fast Fluency Drives Academic Success—Part Two**



Education

August 22, 2018

**On The Map: The Atlas of Student Homelessness in New York City 2018 —Section 1**



# Interactive Data

ICPH produces interactive tools and data for users to further explore the effects of homelessness on children and their families. These tools allow people from different fields to tailor and engage with ICPH data in a way that is meaningful to them and the unique needs of their organization.



Health & Well-Being

May 10, 2018

**The Health and Well-Being of Homeless High School Students**



Education

April 11, 2018

**Suspension Hubs Interactive Map**



Education

April 10, 2018

**The United States of Homelessness**





# Student Homelessness: *How is it defined?*

**Lacking a fixed, regular, and adequate nighttime residence**

- Emergency or transitional sheltered
- Doubled up due to economic hardship
- Hotel or motel
- Unsheltered

**Often “hidden” because they are more likely to live doubled up;  
harder to account for and provide them with services**

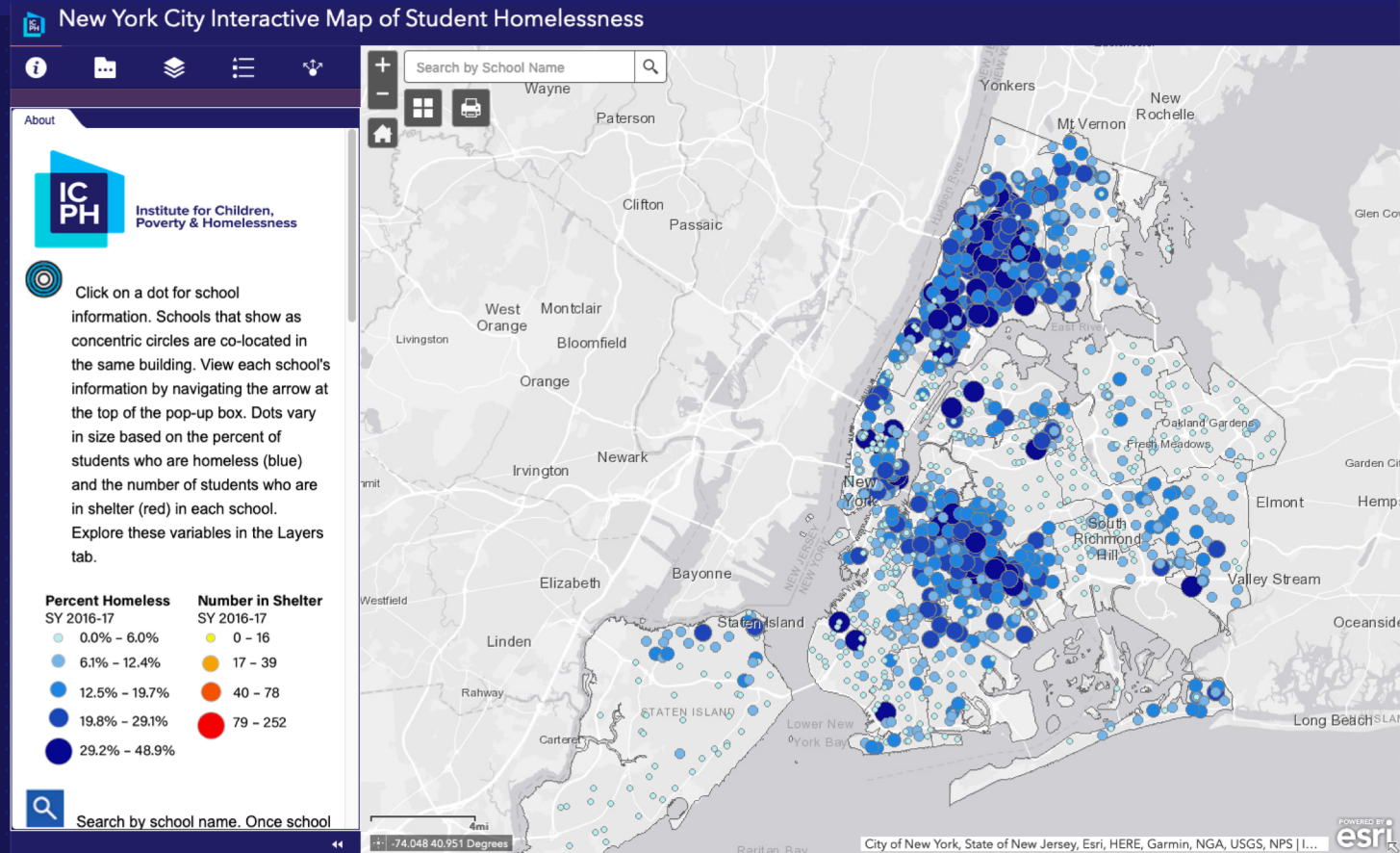
# Accessing Data on Homelessness

- Combination of publicly-available data and FOIL requests and data sharing agreements
- One of the biggest challenges is privacy—accessing and displaying data
- Collaborative effort between policy team and GIS team to clean and prepare data for mapping



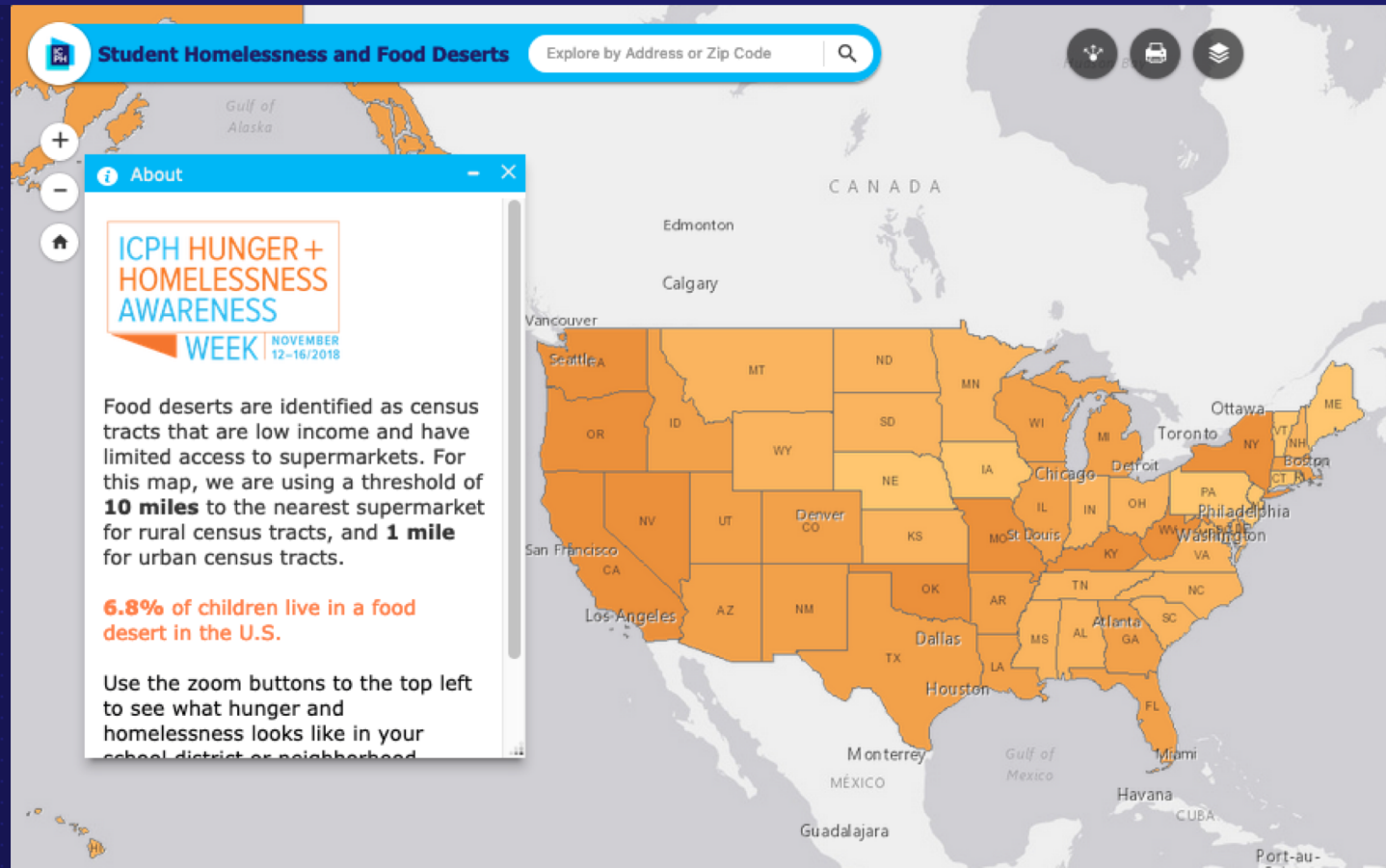
# NYC Interactive Map of Student Homelessness

- Local picture of homelessness—varies district by district
- Able to view severity of Homelessness by various municipal boundaries.



[Explore the web map.](#)

# Student Homelessness & Food Deserts





# Student Homelessness & Food Deserts

What is a food desert?

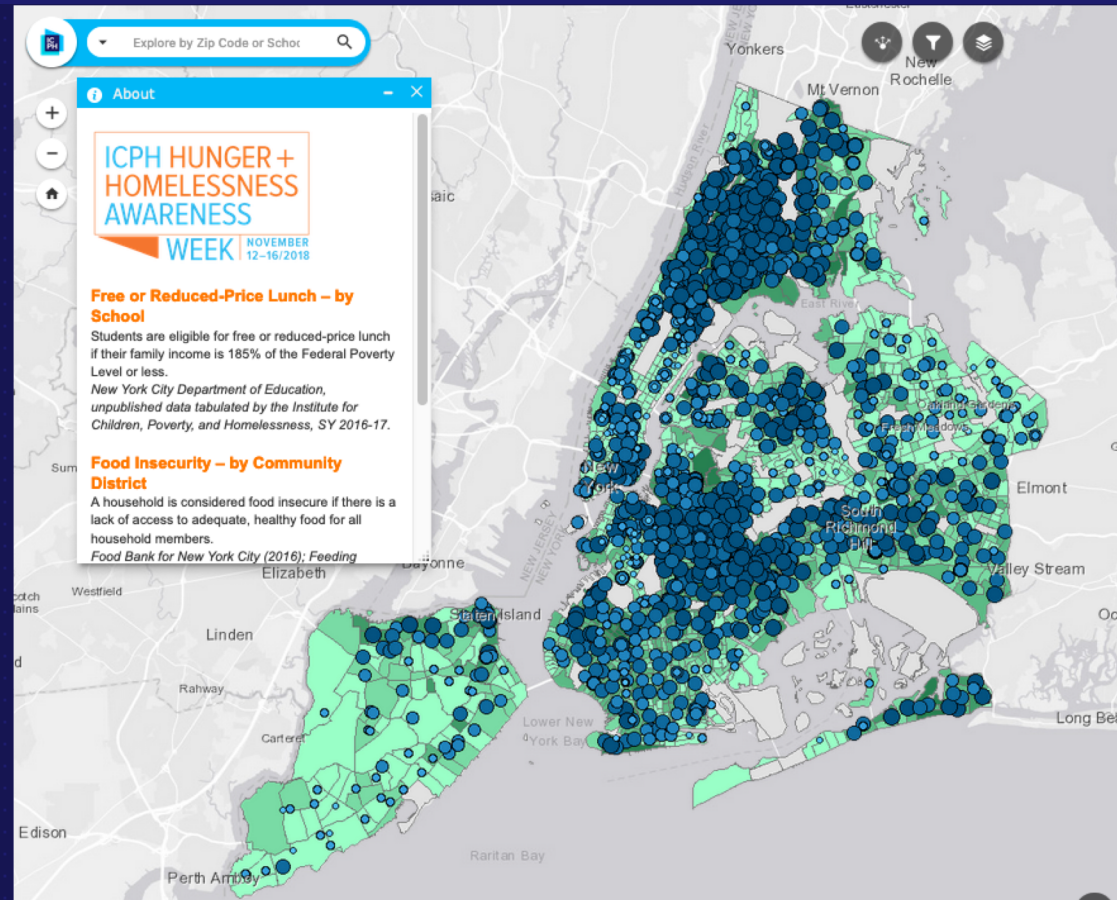
- A census tract that is majority low-income AND having limited access to a supermarket.
- For this map, we are using a threshold of 10 miles to the nearest supermarket for rural census tracts, and 1 mile for urban census tracts.

6.8% of children live in a food desert in the U.S.



[Explore the web map.](#)

# Food Insecurity and NYC's Student Homelessness





# Food Insecurity Criteria

## Free or Reduced-Price Lunch – by School

- Students are eligible for free or reduced-price lunch if their family income is 185% of the Federal Poverty Level or less.

## Food Insecurity – by Community District

- A household is considered food insecure if there is a lack of access to adequate, healthy food for all household members.

## Food Stamps/Supplemental Nutrition Assistance Program (SNAP) – by Census Tract

- A household is eligible for food stamps or SNAP benefits if their household income is 130% of the Federal Poverty Level or less, in addition to employment requirements.



[Explore the web map.](#)

# Who has been interested and how has this been helpful?

- NYC Department of Education
- Community Organizations and Advocacy Groups
- Local Government
- Media
- Foundations

## Local level data helped make the case for additional STH support services:

- STH Social Workers & Attendance teachers
- Increased funding support for STH middle and high school enrollment
- Creation of new School Based Health Centers
- RFP from Deutsche Bank
- Broader recognition of STH as group in need of additional support services and attention
- Funding for homeless students in Seattle

# Questions?





# Thank You!

media@ICPHusa.org

(212) 358-8086

To download copies of our publications:

<http://www.ICPHusa.org/reports/>

