

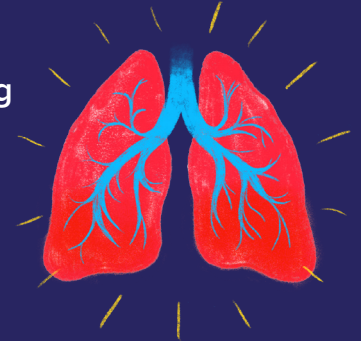


# Asthma Disproportionately Affects Homeless Students

## Higher Diagnosis

Homeless students are significantly more likely to have asthma than their housed peers. Unstable housing situations along with triggers such as stress, dirty living conditions, and other environmental factors can lead to or exacerbate asthma attacks.

**38% of homeless high schoolers** report having been diagnosed with asthma, compared to **22% of housed students**.



### Asthma Rates\* (Homeless vs. Housed)

Arkansas	58%	25%	Idaho	37%	19%	New York City	37%	22%
California	38%	22%	Illinois	31%	21%	North Carolina	39%	23%
Chicago	35%	20%	Kansas	22%	22%	Oakland	33%	26%
DeKalb County	34%	28%	Kentucky	34%	26%	Palm Beach	42%	20%
Delaware	20%	24%	Los Angeles	41%	20%	Pennsylvania	38%	24%
Hawaii	37%	29%	Maine	26%	26%	Philadelphia	37%	27%
			Montana	35%	21%	Virginia	31%	20%
			New Mexico	31%	24%	Wisconsin	35%	20%

Homeless students in these areas reported the highest rates:

Arkansas **58%** | Palm Beach, FL **42%** | Los Angeles, CA **41%**

**Over 2X**

the rate of housed students in those localities.

## Higher Uncertainty

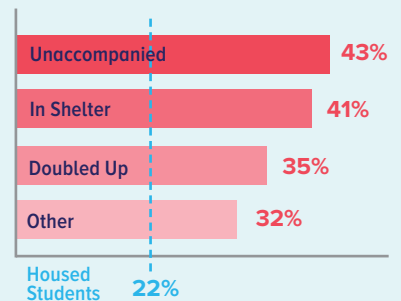
Homeless students were also 2X more likely than their housed peers to be uncertain of ever having been diagnosed.

**12% vs. 5%**

Undiagnosed and/or untreated asthma leads to asthma attacks and school **absenteeism**, already prevalent among homeless students.

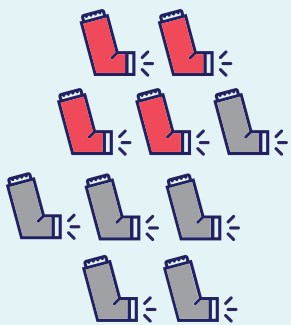
## Higher Disparity

Regardless of where homeless students sleep\*, their asthma rates are higher than those of housed students.



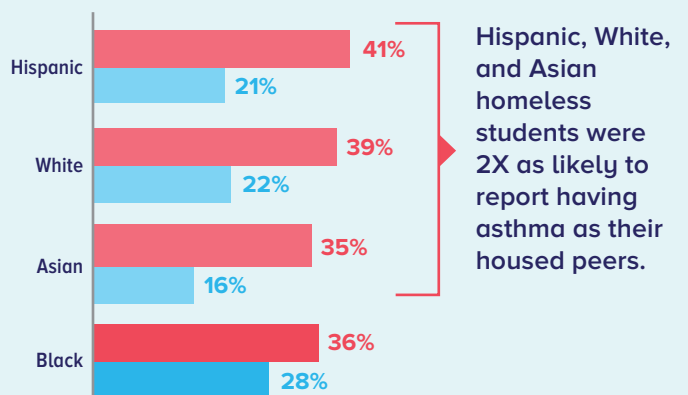
### In New York City

40% of homeless students with asthma reported suffering a recent attack—1.5X the rate of housed students.



### In Maine

39% of asthmatic homeless students missed school due to their asthma during the past year—3X the rate of housed students.



The disparity in asthma rates between black homeless and housed students was the smallest among all groups.

Hispanic, White, and Asian homeless students were 2X as likely to report having asthma as their housed peers.



\*Note: Data are weighed estimates from the 2016–17 Youth Risk Behavior Survey (YRBS). Only select states and cities report data on these indicators. For a list of data notes and definitions, visit <https://www.icphusa.org/AsthmaNotes>